

LARSON®

Storm Doors



MANIFEST YOUR OUTER HOME

Open the full potential of your entry – season after season.

For more than 70 years, we've perfected storm doors designed to let the best of nature in while keeping the worst out.

FIND YOUR PERFECT STORM DOOR

Larson® storm doors help you create great spaces where your family feels safe, comfortable and protected. Use these icons throughout the brochure to help select your perfect storm door.

PLATINUM COLLECTION



Platinum Hidden Closer

Hidden built-in closer with Click&Hold™ technology to hold the door open.



Dominator™ Glass

Dominator inner shield between two glass panels to help prevent break-ins. Includes Break-In Protection Warranty.



Dominator™ Screen

Dominator .032" stainless steel mesh is tested to withstand 1,000 lbs. of force to help prevent break-ins.* Includes Break-In Protection Warranty.

CONSTRUCTION



Aluminum Frame

Constructed with heavy-duty, low-maintenance aluminum and surrounded by a dual** or heavy-duty weatherstrip for exceptional weather resistance.



Composite Surface

High-performance composite surface over solid wood core and durable weatherstrip deliver weather-resistant protection that lasts.



CLOSERS



Hands-Free Convenience

Adjustable-speed closer with hold-open button keeps the door in place with the tap of a toe. Available as a two-closer system on select models.**

SCREEN OPTIONS



Instant Airflow With a View

Screen Away® retractable screen disappears above the window for a clear view.



Seasonal Ventilation, Maximum Light

Interchangeable fullview glass and screen open the home to the best of each season, including fresh air in the summer and natural light in the winter.



Flexible Ventilation

Built-in Reversa Screen offers top or bottom ventilation.



Open to Fresh Air

Built-in single-vent screen provides convenient bottom ventilation.



Fresh Air Without Compromise

Tear-resistant WearTuff® screen provides durable ventilation.

*Stainless steel wire mesh tested to withstand 1,000 lbs. per lineal in. of force.

**Included on 149 Elegant Selection and 146 Easy Vent Selection models only.

Storm Door Features *continued*

PET-FRIENDLY OPTIONS



Medium Pet Door

Built-in 8" x 12" pet door fits pets up to 40 lbs.



Large Pet Door

Built-in 10" x 17" pet door fits pets up to 100 lbs.



Extra-Large Pet Door

Built-in 14" x 23" pet door fits pets up to 220 lbs.



Slide-In Pet Cover

Includes slide-in pet cover for added security while not in use.

HANDLESETS

QuickFit™ QuickFit™ Handlesets

Sold separately and required to operate the built-in deadbolt on Platinum Collection, 149 Elegant Selection™ and 146 Easy Vent® Selection models.



Handleset Included

Includes a stylish handleset. Check product details for specific features like keyed locks.

INSTALLATION / HINGING OPTIONS



Platinum Pre-Hung Door

Pre-assembled for easy surface mount installation. Select **L** (left-hinge) or **R** (right-hinge) as viewed from outside.



Universal Hinging

Easy installation with pre-drilled placement holes and no-cut rails with adjustable extenders for an exact fit.

WARRANTY



Enjoy With Confidence



Larson offers lifetime or 10-year limited warranties on all storm doors. Learn more at larsondoors.com/warranty.

UPGRADE TO LOW-E GLASS

Select storm doors can be upgraded to Low-E glass. Factory-coated Low-E glass minimizes the amount of UV rays that pass through to help reduce fading. Plus, Low-E delivers exceptional energy efficiency and can increase the insulating value of an entry by 24% compared to clear glass.*

THE LOW-E ADVANTAGE



Helps keep rooms cooler in the summer by reflecting the sun's heat.



Helps keep rooms warmer in the winter by minimizing heat loss.



Look for this icon on models that offer Low-E glass options.



*Based on simulation of clear and Low-E glass in fullview storm door over entry with 1-3/4" foam-insulated, stamped raised panels.

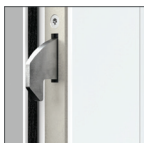
Note: See your Larson seller or visit larsondoors.com for details on limited warranties and exclusions.

Above: Platinum 459FV Interchangeable Full Glass, Black Frame with Straight Matte Black QuickFit Handleset



Platinum Collection

The Platinum Collection delivers sleek, modern design and offers premium standard features including a multi-point locking system, hidden built-in closer with Click&Hold™ technology and triple weatherstrip.



PLATINUM SECURITY

Additional security with multi-point locking system. QuickFit™ handleset sold separately.



PLATINUM HIDDEN CLOSER

Hidden built-in closer with Click&Hold™ technology to hold the door open.



PLATINUM TRIPLE SEAL

Triple weatherstrip to help protect your home and entry door from harsh weather.



PLATINUM PRE-HUNG DOOR

Pre-assembled for easy surface mount installation. Select **L** (left-hinge) or **R** (right-hinge) as viewed from outside.



THE FAST INSTALL*

Pre-assembled for easy surface mount installation. Just place on the opening and secure with pre-attached screws.



LIFETIME LIMITED WARRANTY

*Preparation time not included. Based on typical installation. Actual times may vary. Note: See your Larson seller or visit larsondoors.com for details on limited warranties and exclusions.

Left: Platinum 456FV Retractable Screen, White Linen Frame with Straight Aged Bronze QuickFit Handleset

Platinum Collection

FRAME COLORS



White
Linen



Pebblestone



Woodland



Graphite



Black

QUICKFIT™ HANDLESETS

Sold separately and required to operate the built-in deadbolt.

Straight Handle



Matte
Black



Brushed
Nickel



Aged
Bronze

Curved Handle



Brushed
Nickel



Brass



Antique
Brass



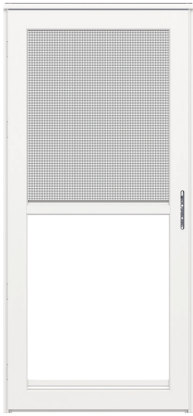
Aged
Bronze

PRODUCT AVAILABILITY

Model	Available Sizes	Custom*
456FVE Low-E Retractable Screen	32" x 81" 36" x 81"	✓
456FV Retractable Screen		
459FVE Low-E Interchangeable Full Glass		
459FV Interchangeable Full Glass		
449-04 Secure Glass		
450-18 Secure Screen		



AVAILABLE MODELS



SCREEN
AWAY



456 Retractable Screen Low-E | Clear

Screen Away® disappears above the window for a clear view.



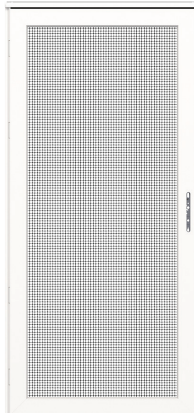
459 Interchangeable Full Glass Low-E | Clear

Includes screen for seasonal ventilation.



449 Secure Glass

Dominator™ inner shield between two glass panels to help prevent break-ins. Includes Break-In Protection Warranty.



450 Secure Screen

Dominator™ .032" stainless steel mesh is tested to withstand 1,000 lbs. of force to help prevent break-ins.** Includes Break-In Protection Warranty.

*Custom doors have extended, variable lead times. Once placed, custom orders cannot be canceled.

**Stainless steel wire mesh tested to withstand 1,000 lbs. per lineal in. of force. Note: See your Larson seller or visit larsondoors.com for details on limited warranties and exclusions. Product finish colors are approximate; actual finish colors may vary.

Left: Platinum 459FV Interchangeable Full Glass, White Linen Frame with Straight Matte Black QuickFit Handleset

Full Glass & Screen Options

149 ELEGANT SELECTION™

Protect your entry beautifully. The Elegant Selection frames your entry, letting you enjoy the view from the inside or outside of your home. Includes a screen for seasonal ventilation.

FEATURES

See complete feature details on pages 2–5.

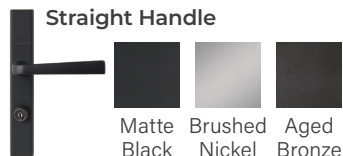


FRAME COLORS



QUICKFIT™ HANDLESETS

Sold separately and required to operate the built-in deadbolt.



PRODUCT AVAILABILITY

Model	Available Sizes	Special Standard	Custom*
149FVE Low-E	32" x 81" 36" x 81"		✓
149FV Clear		30" x 81" 34" x 81" White	✓
149PV Pet Door			
149BV Bevel Glass			
149EBV Elegant Bevel		36" x 81"	

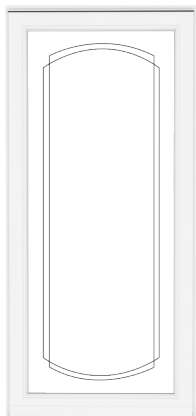
AVAILABLE MODELS



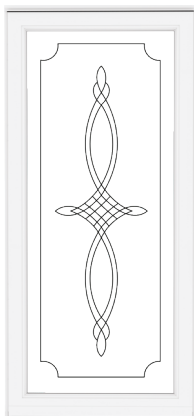
149 Fullview
Low-E | Clear



149 Pet Door**
Built-in 8" x 12" pet door fits pets up to 40 lbs.



149 Bevel Glass



149 Elegant Bevel Glass

*Custom doors have extended, variable lead times. Once placed, custom orders cannot be canceled.

**The 149PV does not include an interchangeable screen.

Note: See your Larson seller or visit larsondoors.com for details on limited warranties and exclusions. Product finish colors are approximate; actual finish colors may vary. Pet flap not intended for child use or to keep children or pets inside.

Full Glass & Screen Options

SEASONAL VENTILATION, MAXIMUM LIGHT

Aluminum full glass doors provide low-maintenance weather resistance and include a lifetime limited warranty for your peace of mind. Includes a screen for seasonal ventilation.

FEATURES

See complete feature details on pages 2–5.



FRAME COLORS



White

Almond

Sandstone

Brown

Black

HANDLESET INCLUDED

Includes decorative lever handleset with built-in deadbolt.



Brushed
Nickel

Brass

PRODUCT AVAILABILITY

Model / Handleset	Available Sizes	Custom*
350-17 Brushed Nickel	32" x 81" 36" x 81"	✓
350-04 Brass		

AVAILABLE MODEL



**350 Classic-View
Fullview**



*Custom doors have extended, variable lead times. Once placed, custom orders cannot be canceled.

Note: See your Larson seller or visit larsondoors.com for details on limited warranties and exclusions. Product finish colors are approximate; actual finish colors may vary.

Above: 350-04 Classic-View Fullview, Brown Frame, Brass Handleset

Full Glass & Screen Options

FRESH AIR WITHOUT COMPROMISE

The kid- and pet-friendly WearTuff® screen is reinforced in frame for durable ventilation. Screen upgrade options are available.

FEATURES

See complete feature details on pages 2–5.



FRAME COLORS



White



Brown

HANDLESET INCLUDED

Includes color-matched lever handleset with an inside lock.

SCREEN OPTIONS

WearTuff®

Durable mesh screen holds up to wear and tear.



UPGRADE SCREEN OPTIONS

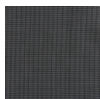
PetScreen®

Tear- and puncture-resistant screen built with your pet in mind.



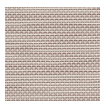
No-See-Um

Tight mesh guards against small insects.

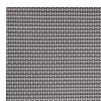


SunTex. 80

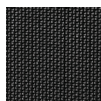
Provides approximately 75% UV blockage for shade and privacy.



Stucco



Gray

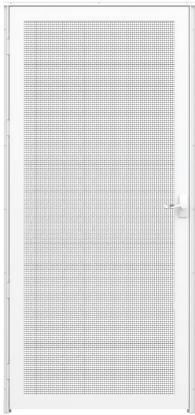


Black

PRODUCT AVAILABILITY

Model / Screen Type	Available Sizes	Custom*
360-48 WearTuff Screen	32" x 81" 36" x 81"	✓
360-48 Screen Upgrades		

AVAILABLE MODEL



**360-48 WearTuff.
Full Screen**



*Custom doors have extended, variable lead times. Once placed, custom orders cannot be canceled.

Note: See your Larson seller or visit larsondoors.com for details on limited warranties and exclusions. Product finish colors are approximate; actual finish colors may vary. Not intended to keep children or pets inside.

Above: 360-48 WearTuff Full Screen, White Frame

Retractable Screen Options

146 EASY VENT. SELECTION

The Easy Vent Selection provides instant airflow and clear views with the Screen Away® retractable screen.

FEATURES

See complete feature details on pages 2–5.



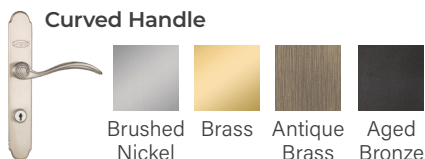
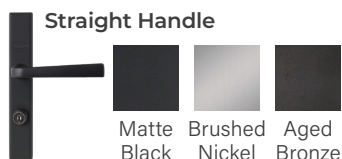
FRAME COLORS



¹Only available on 146FV model. ²Not available on 146HV model.

QUICKFIT™ HANDLESETS

Sold separately and required to operate the built-in deadbolt.



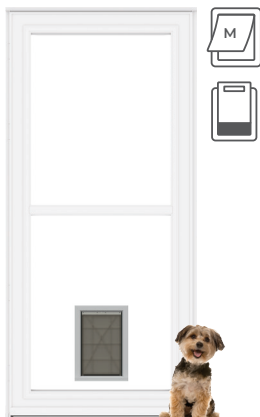
PRODUCT AVAILABILITY

Model	Available Sizes	Special Standard	Custom*
146FVE Low-E	32" x 81" 36" x 81"	34" x 81" – White	✓
146FV Clear		30" x 81" – White 34" x 81" – White, Sandstone, Brown, Black	✓
146PV Pet Door			
146MV Midview		34" x 81" – White, Sandstone, Brown, Black	
146HV Highview			
146BV Bevel Glass		36" x 81"	

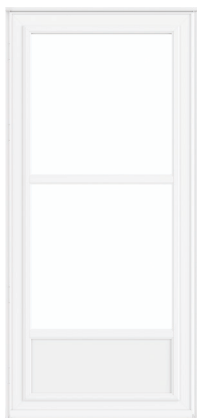
AVAILABLE MODELS



146 Fullview
Low-E | Clear



146 Pet Door
Built-in 8" x 12" pet door fits pets up to 40 lbs.



146 Midview



146 Highview



146 Bevel Glass

*Custom doors have extended, variable lead times. Once placed, custom orders cannot be canceled.

Note: See your Larson seller or visit larsondoors.com for details on limited warranties and exclusions. Product finish colors are approximate; actual finish colors may vary. Pet flap not intended for child use or to keep children or pets inside.

Retractable Screen Options

INSTANT AIRFLOW WITH A VIEW

Aluminum storm doors with a Screen Away® retractable screen provide low-maintenance weather resistance and include a lifetime limited warranty for your peace of mind.

FEATURES

See complete feature details on pages 2-5.



FRAME COLORS



White

HANDLESET FINISH OPTIONS

Includes decorative lever handleset with color-matched interior and keyed lock.



Brushed
Nickel



Brass

PRODUCT AVAILABILITY

Model / Handleset	Available Sizes
356-52 Brushed Nickel	32" x 81" 34" x 81"
356-60 Brass	36" x 81"

AVAILABLE MODELS



356 Lifestyle Fullview
Screen Away.



Note: See your Larson seller or visit larsondoors.com for details on limited warranties and exclusions. Product finish colors are approximate; actual finish colors may vary.

Above: 356-52 Lifestyle Fullview Screen Away, White Frame, Brushed Nickel Handleset 19

Retractable Screen Options

INSTANT AIRFLOW WITH A VIEW

Composite surface storm doors with a Screen Away® retractable screen provide high-performance protection from the elements and include a 10-year limited warranty for your peace of mind.

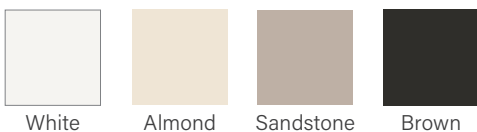
FEATURES

See complete feature details on pages 2–5.



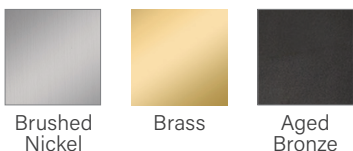
FRAME COLORS

Varies by model. Check product availability table for details.



HANDLESET FINISH OPTIONS

Includes decorative Secure Lock® handleset that varies by model.



PRODUCT AVAILABILITY

Model / Handleset	Available Sizes	Custom*	Frame Colors
830-82 Brushed Nickel	32" x 81" 34" x 81" 36" x 81"	✓	White Almond Sandstone Brown
830-80 Brass			
830-85 Aged Bronze			
370-84 Brushed Nickel	30" x 81" 32" x 81" 34" x 81" 36" x 81"		White Almond Brown
691-52 Brushed Nickel	32" x 81" 36" x 81"	✓	White Sandstone Brown
691-90 Brass			
691-55 Aged Bronze			

AVAILABLE MODELS



830 Lifestyle Midview Screen Away.

Includes matching Secure Lock handleset with an inside lock in brushed nickel, brass or aged bronze.



NEW 370-84 Lifestyle 2.0 Midview Screen Away.**

Includes modern Secure Lock handleset with a keyed lock in brushed nickel.



691 Lifestyle Highview Screen Away.

Includes matching Secure Lock handleset with a keyed lock in brushed nickel, brass or aged bronze.

*Custom doors have extended, variable lead times. Once placed, custom orders cannot be canceled.

**Available summer 2024.

Note: See your Larson seller or visit larsondoors.com for details on limited warranties and exclusions. Product finish colors are approximate; actual finish colors may vary.

CONVENIENCE FOR YOU AND YOUR PET

Invite your pet to enjoy the ease of entering and exiting the home with an aluminum storm door featuring a pre-installed PetSafe® pet flap.

FEATURES

See complete feature details on pages 2–5.



FRAME COLORS



White



Brown

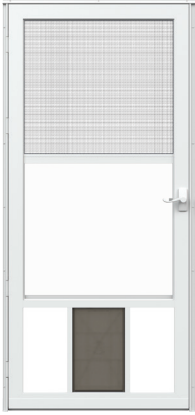
HANDLESET INCLUDED

Includes color-matched lever handleset with an inside lock.

PRODUCT AVAILABILITY

Model	Available Sizes
360-79 Pet View	32" x 81"
360-49 Pet Breeze	36" x 81"

AVAILABLE MODELS



360-79 Classic-View Pet View

Built-in 10" x 17" pet door
fits pets up to 100 lbs.



360-49 Pet Breeze

Built-in 10" x 17" pet door fits
pets up to 100 lbs.



Note: See your Larson seller or visit larsondoors.com for details on limited warranties and exclusions. Product finish colors are approximate; actual finish colors may vary. Pet flap not intended for child use or to keep children or pets inside.

Above: 360-79 Classic-View Pet View, White Frame with 10" x 17" Pet Door

CONVENIENCE FOR YOU AND YOUR PET

Invite your pet to enjoy the ease of entering and exiting the home with a composite surface storm door featuring a pre-installed PetSafe® pet flap.

FEATURES

See complete feature details on pages 2–5.



FRAME COLORS



White



Almond

HANDLESET INCLUDED

Includes matching Secure Lock® handleset with an inside lock.

PRODUCT AVAILABILITY

Model	Available Sizes	Custom*
370-79 10" x 17" Pet Single-Vent	32" x 81" 36" x 81"	✓
370-78 14" x 23" Pet Single-Vent		

AVAILABLE MODELS



370-79 Life-Core. Pet Single-Vent

Built-in 10" x 17" pet door fits
pets up to 100 lbs.



370-78 Life-Core. Pet Single-Vent

Built-in 14" x 23" pet door fits
pets up to 220 lbs.



*Custom doors have extended, variable lead times. Once placed, custom orders cannot be canceled.

Note: See your Larson seller or visit larsondoors.com for details on limited warranties and exclusions. Product finish colors are approximate; actual finish colors may vary. Pet flap not intended for child use or to keep children or pets inside.

Above: 370-79 Life-Core Pet Single-Vent, White Frame with 10" x 17" Pet Door

FLEXIBLE VENTILATION

Built-in Reversa Screen offers top or bottom ventilation.

FEATURES

See complete feature details on pages 2–5.



FRAME COLORS



White



Brown

HANDLESET INCLUDED

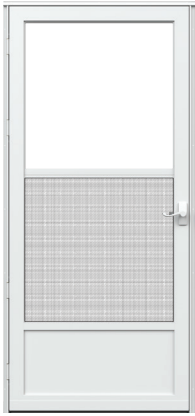
Included handleset will match the finish of the door.

PRODUCT AVAILABILITY

Model	Available Sizes
360-16 / 660-16 Classic-View	30" x 81" 32" x 81"
370-50 Life-Core	34" x 81" 36" x 81"



AVAILABLE MODELS



LIFETIME
LIMITED WARRANTY



360-16 / 660-16 Classic-View Reversa Screen

Includes lever handleset
with inside lock.



10 YEAR
LIMITED WARRANTY



370-50 Life-Core. Reversa Screen

Includes strong-hold handleset
with keyed locked.

Note: See your Larson seller or visit larsondoors.com for details on limited warranties and exclusions. Product finish colors are approximate; actual finish colors may vary.

Bottom: 360-16 Classic-View Reversa Screen, White Frame



OPEN TO FRESH AIR

Built-in single-vent screens provide convenient bottom ventilation.

FEATURES

See complete feature details on pages 2–5.

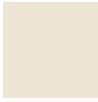


FRAME COLORS

Varies by model. Check product availability table for details.



White



Almond



Sandstone



Brown

HANDLESET INCLUDED

Included handleset will match the finish of the door.*

PRODUCT AVAILABILITY

Model	Available Sizes	Custom*	Frame Colors
278-SS Life-Core	30" x 81" 32" x 81" 34" x 81" 36" x 81"	✓	White Almond Sandstone Brown
380-05 Mobile Home	30" x 74" 30" x 75" 30" x 76" 32" x 74" 32" x 75" 32" x 76" 32" x 78" 34" x 78" 36" x 74" 36" x 78"		White
298-SS Life-Core	30" x 81" 32" x 81" 34" x 81" 36" x 81"		White Brown

AVAILABLE MODELS



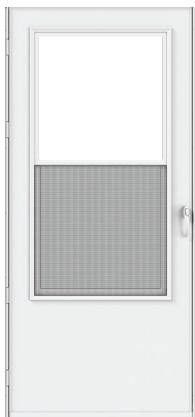
278-SS Life-Core. Single-Vent

Includes lever handleset with inside lock.



380-05 Mobile Home Single-Vent

Includes stylish handleset.



Enhanced 298-SS Life-Core. Composite Surface Single-Vent

Includes stylish handleset that complements the door color.*

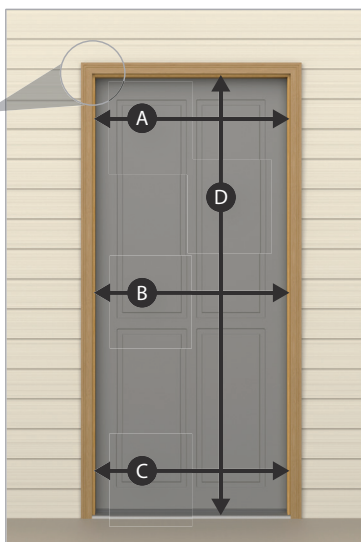
*298-SS white model comes with color-matched handleset and closer. Brown model comes with black handleset and closer.
Note: See your Larson seller or visit larsondoors.com for details on limited warranties and exclusions. Product finish colors are approximate; actual finish colors may vary.

Measuring Guide

EASY MEASURING

One great feature of Larson® storm doors is that they can be easily installed by homeowners, saving on the cost of professional installation. Use the diagram below to record your measurements as shown. If the width measurements vary, use the smallest measurement.

Remember, Larson offers custom sizes to fit a wide range of openings.



RECORD MEASUREMENTS

A	Width
B	Width
C	Width
D	Height

Door Opening	Min. Width	Max. Width	Min. Height	Max. Height
30" x 81"	29-7/8"	30-3/8"	80"	81"
32" x 81"	31-7/8"	32-3/8"		
34" x 81"	33-7/8"	34-3/8"		
36" x 81"	35-7/8"	36-3/8"		

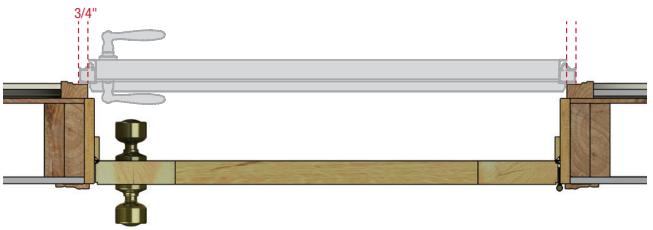
Note: Size availability varies by model. Custom sizes available in select models.*



SURFACE MOUNT 10-MINUTE INSTALL**

(Platinum Collection only)

- Rails mount directly to the face of the exterior brickmould.
- Require 3/4" of clearance on each side and up to 1" of clearance above the opening.

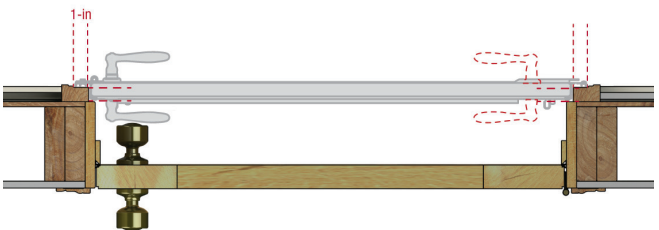


Construction styles may vary.



RECESS MOUNT

- Rails mount inside the opening.
- Requires a 1" wide by 1" deep mounting surface.



Construction styles may vary.

*Custom doors have extended, variable lead times. Once placed, custom orders cannot be canceled.

**Preparation time not included. Based on typical installation. Actual times may vary.



LARSON

larsondoors.com

1-888-483-3768

2333 Eastbrook Drive
Brookings, SD 57006



#larsondoors

LEARN MORE

Visit us at [larsondoors.com](https://www.larsondoors.com) for a comprehensive list of products to make your home more comfortable.

Cover: 370-84 Lifestyle 2.0 Midview Screen Away, White Frame

Back Cover: 298-SS Life-Core Composite Surface Single-Vent, White Frame

©2024 Larson Manufacturing Company, LLC. All rights reserved. LARSON and the Larson logo are trademarks of Larson Manufacturing Company, LLC. Registered trademarks are registered in the U.S. and may be registered internationally. Larson Manufacturing Company, LLC. is an operating company of Fortune Brands Innovations, Inc. All trademarks are property of their respective owners.

Part #09502100 HESB / MAR 2024